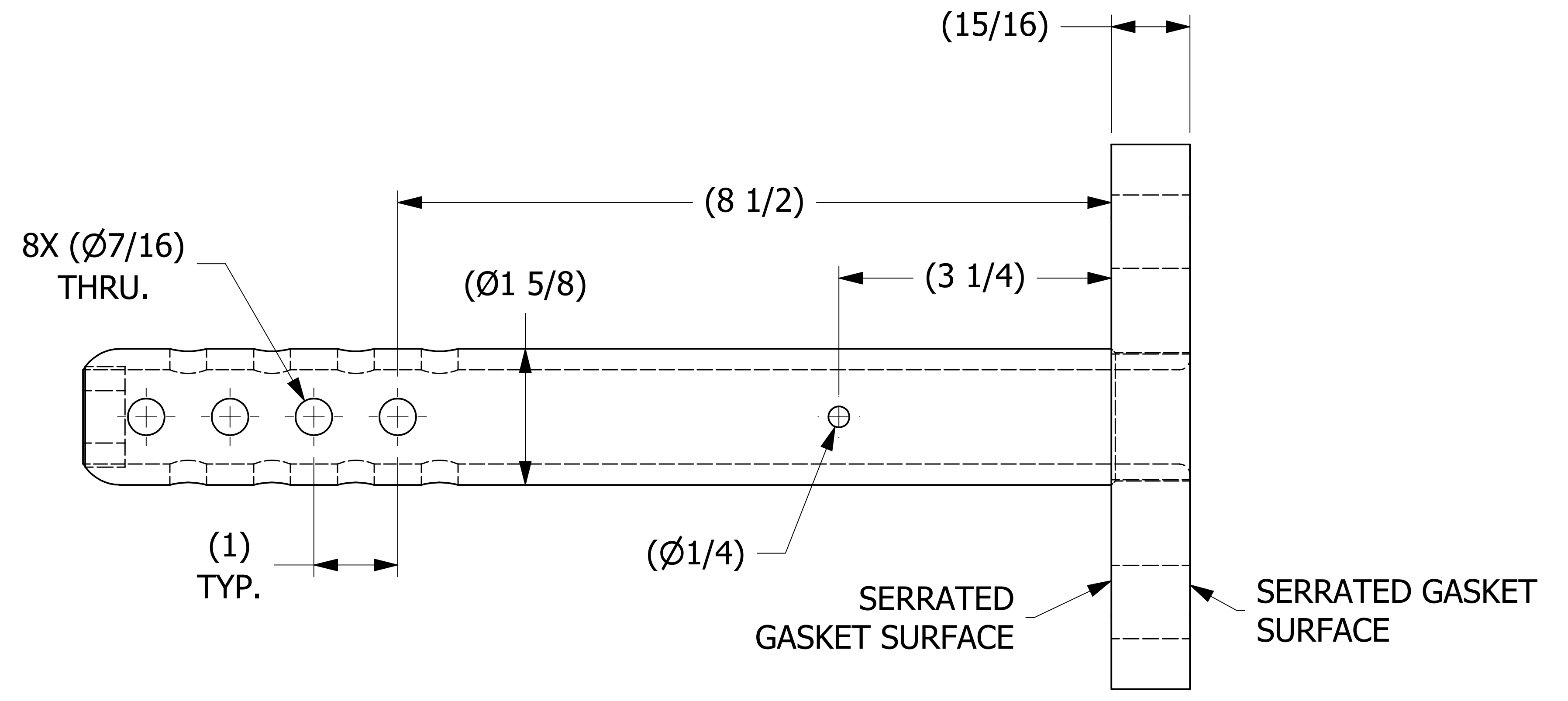
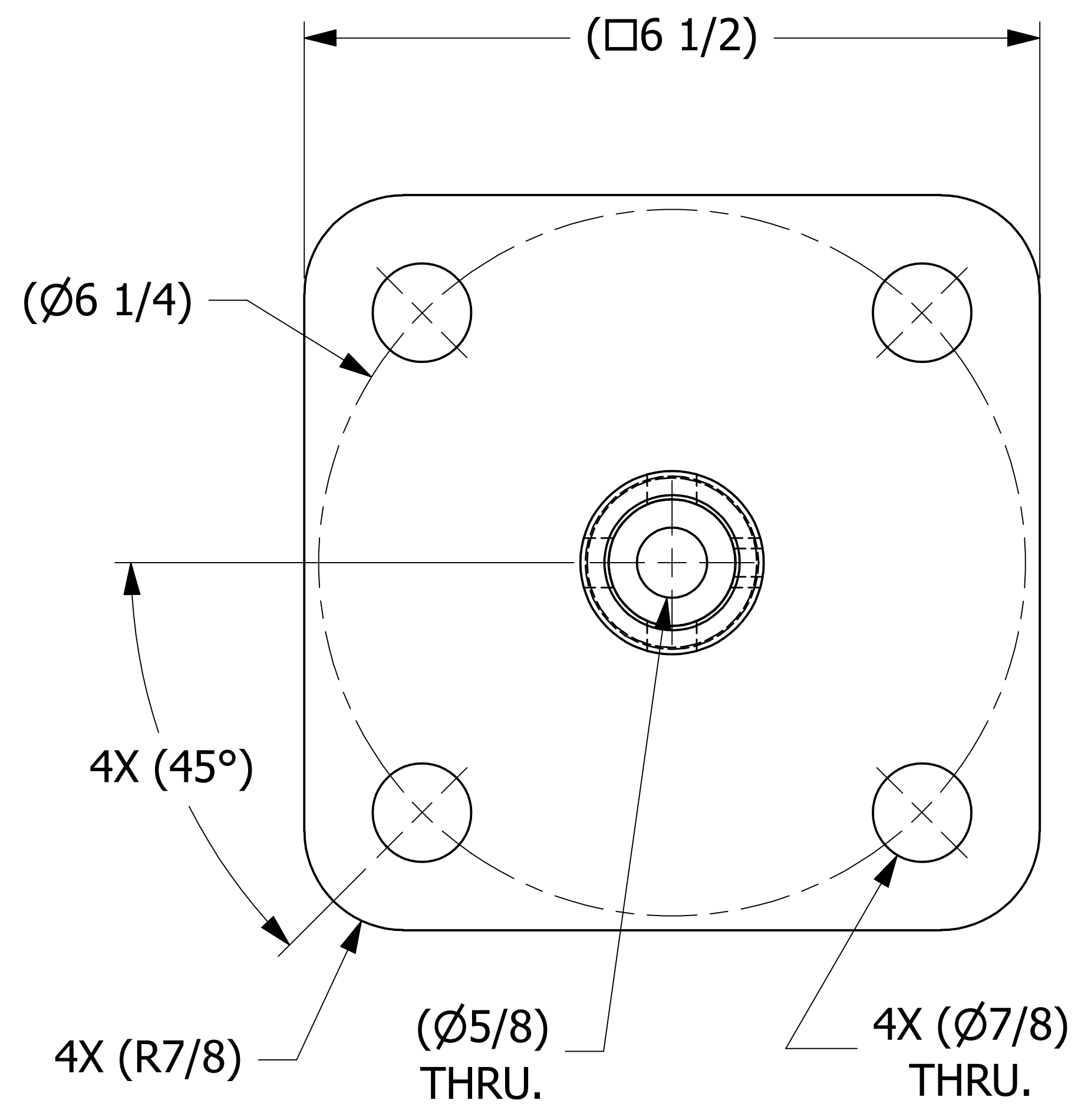


SALES DRAWING SALES DRAWING

SALES DRAWING SALES DRAWING



REV	BY	DATE	DESCRIPTION
E	TAK	3-2-16	ADDED DRAIN HOLE
D	WEB	7-8-13	UPDATED TO CURRENT DRAFTING STANDARDS, ADDED NOTES, REPLACED TITLE BLOCK & UPDATED DIMENSIONS, INCREASED BOLT HOLES FROM 3/4" TO 7/8"
C	ACC	8-6-04	UPDATED BOM AND DESCRIPTION
B	CHL	3-31-04	ADDED AAR APPROVAL#, CHANGED DIM Ø7/8" TO Ø3/4" & CHANGED Ø3/4" DIM TO REFERENCE
A	ACC	12-29-03	ADDED PART INTO SYSTEM

<small>UNLESS OTHERWISE SPECIFIED DIMENSIONAL TOLERANCES</small> FRACTIONAL: ±1/16 X.XX: ±.03 X.XXX: ±.015 ANGULAR: ±1° DEBURR ALL SHARP EDGES. ALL MACHINED SURFACES TO HAVE A 125 RMS FINISH UNLESS NOTED OTHERWISE. <small>THIRD ANGLE PROJECTION</small>	DRAWN BY:	ACC
	CHECKED BY:	
	PROTOTYPE BY:	ACC
	PROTOTYPE DATE:	5/28/2013
	APPROVED FOR PRODUCTION BY:	ACC
PRODUCTION DATE:	12/29/2003	

SALCO PRODUCTS, INC.

PART NAME: **SURGE PROTECTOR**

MATERIAL: **SALCO PE**

PROJECT #: **030708** SHEET #: **1 OF 1** SCALE: **1:1**

DRAWING #: **D18183** PART #: **HSSPRDSQ**

THIS PRINT, PROPERTY OF SALCO PRODUCTS INC. CONTAINS PROPRIETARY INFORMATION AND MUST NOT BE COPIED, REPRODUCED, OR USED DETRIMENTALLY TO OUR INTEREST.